



2040



2040

TENDA A BRACCI CON CASSONETTO

Cassette folding arm awning
Store coffres
Hülsen und Kassettenmarkisen
Toldo a brazo con cofre

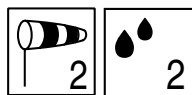
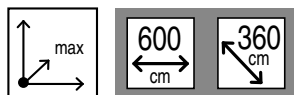
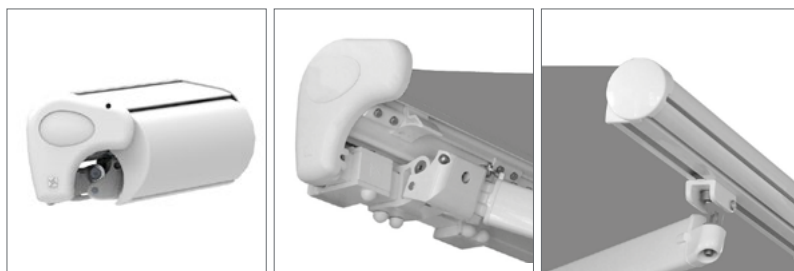
IT 2040 è una tenda a bracci estensibili su barra quadra 40mm in acciaio zincato e verniciato con cassonetto a scomparsa parziale e con bracci a doppio cavetto inguainato o a cinghia. Questo modello viene fornito di un supporto braccio basculante brevettato che consente di regolare la tenda senza dover inclinare il cassonetto.

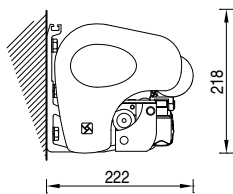
EN 2040 is a folding arm awning on a 40mm galvanized and painted steel square bar with half cassette and double covered cables or belt arms. This model includes a patented tipping system which allows to adjust the awning's inclination without acting on the cassette itself.

FR 2040 est un store banne à bras extensibles sur barre carrée 40mm en acier zingué et laqué, avec des bras à double câble gainé ou sangle avec un semi coffre. Le support de bras à basculement breveté permet le réglage de l'inclinaison du store sans modifier la position du coffre.

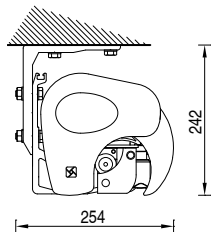
DE 2040 Hülsenmarkise, 40mm stahlverzinktes und lackiertes Tragrohr, Doppelseil-oder Gürtelarmen. Dieses Modell ist mit einer patentierten Kipparmkonsole ausgerüstet, welches eine Einstellung erlaubt ohne dabei die Kassette neigen zu müssen. Wand- oder Deckenmontage ist möglich, sowie auch Dachmontage.

ES 2040 es un toldo con brazos extensibles sobre barra cuadrada 40mm en acero galvanizado y lacado con cofre opcional y con brazos con doble cable enfundado o cinta. Este modelo viene con un soporte brazo basculante patentado que permite regular el toldo sin tener que inclinar el cofre.

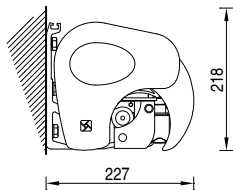




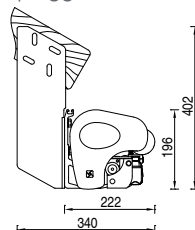
Installazione a parete
Wall installation



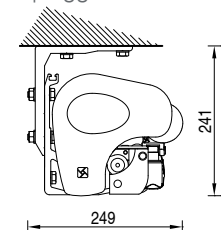
Installazione a soffitto con
terminale "spiaggiale"
Ceiling installation with
"spiaggiale" front bar



Installazione a parete con
terminale "spiaggiale"
Wall installation with
"spiaggiale" front bar



Installazione sottotetto
Under-roof installation



Installazione a soffitto
Ceiling installation

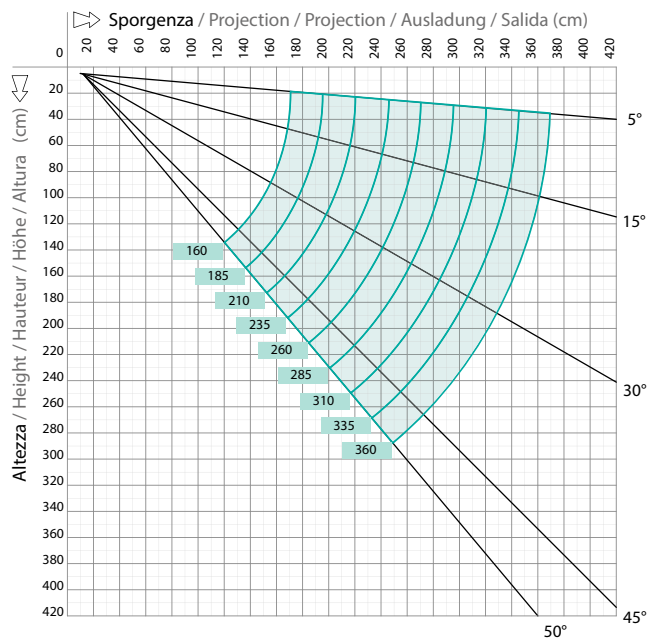


Diagramma di copertura - Installazione parete/soffitto
Covering diagram - Wall/ceiling installation

		Ingombri minimi della tenda finita Minimum awning encumbrances Encombrenents minimum du store fini Mindestabmessungen der Markise Tamaño mínimo del toldo								
(cm)		160	185	210	235	260	285	310	335	360
		205	230	255	280	305	330	355	380	405

BRACCI ESTENSIBILI

Folding arm
Bras extensibles
Gelenkarm
Brazos extensibles

BALTEUS HI-R

BALTEUS HI-R + LED

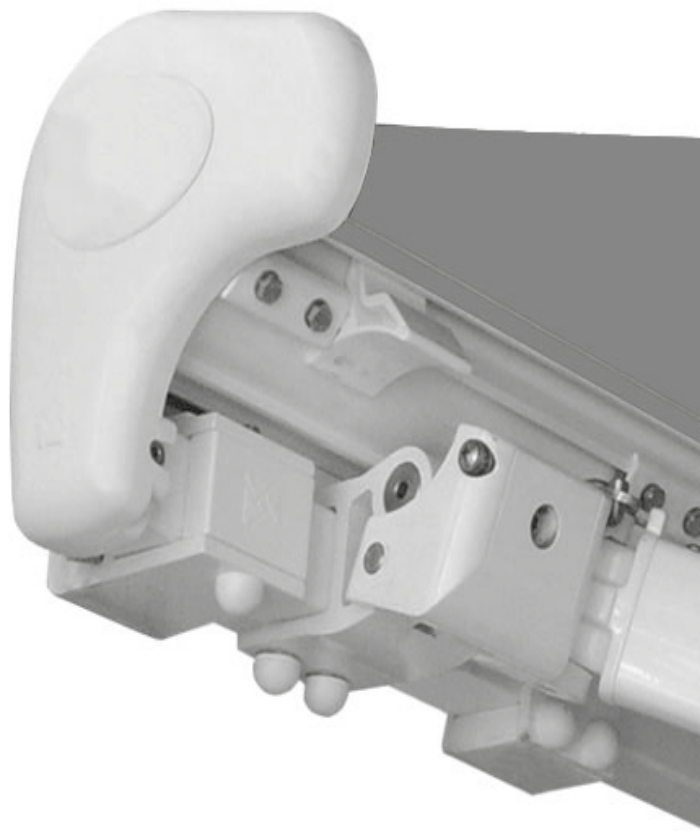
↙ min. 160 cm.
↘ max. 335 cm.



BALTEUS

BALTEUS + LED

↙ min. 160 cm.
↘ max. 360 cm.





BAT SPA | www.batgroup.com



BAT SCANDINAVIA AB | www.batgroup.com/sv/

